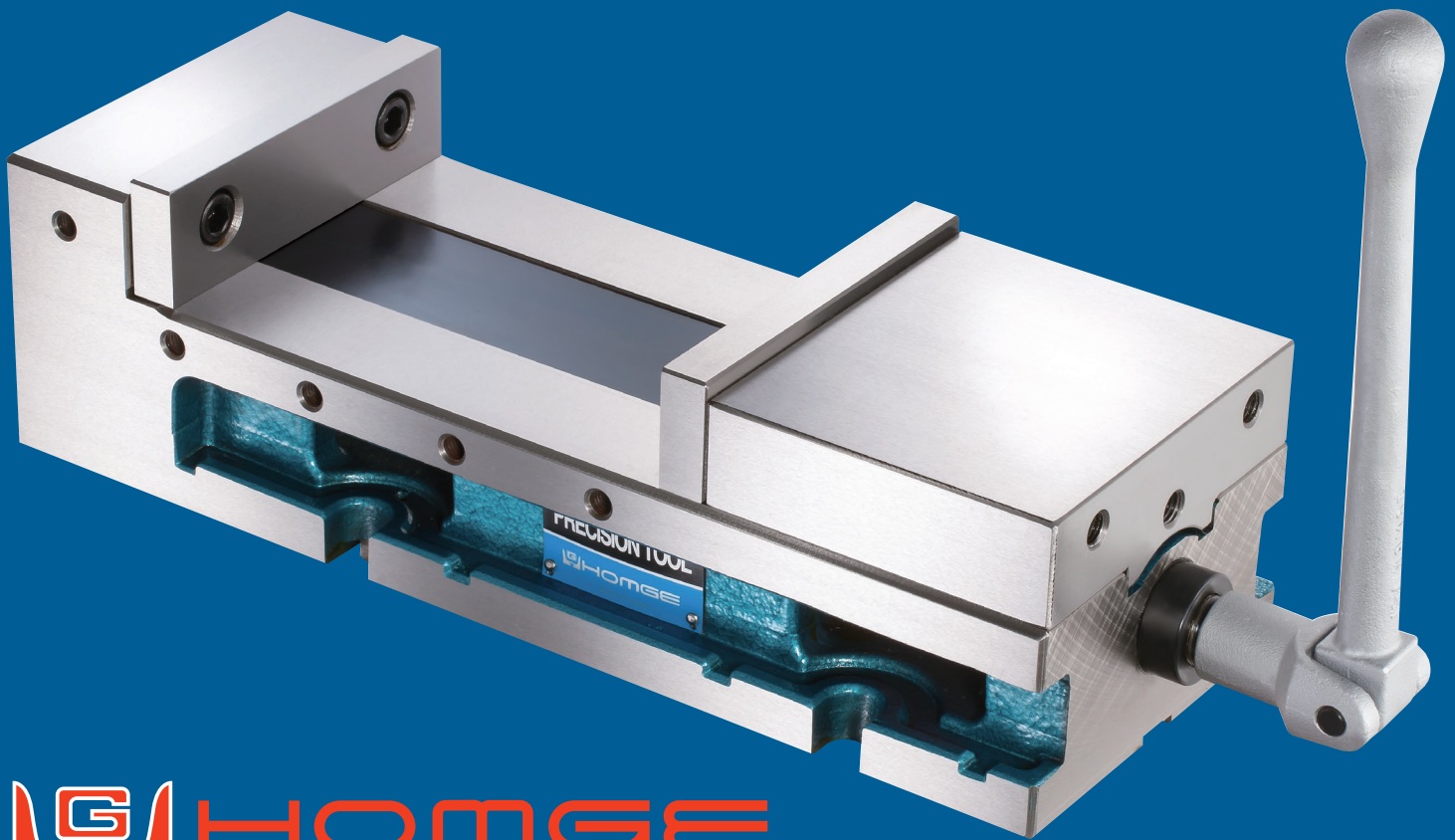




SUPER-OPEN M/C ANGLE

WISE

Significantly upgrade CNC Machining Centers



- Super-Big Jaw Opening
- ANGLE-LOCK SYSTEM ensure to pull the work-piece down

HOMGE is proudly distributed in Canada by Caliber Industrial Supply



Caliber Industrial Supply
5500 Tomken Rd, Unit #2
Mississauga, ON L4W 2Z4
www.caliberindustrial.com

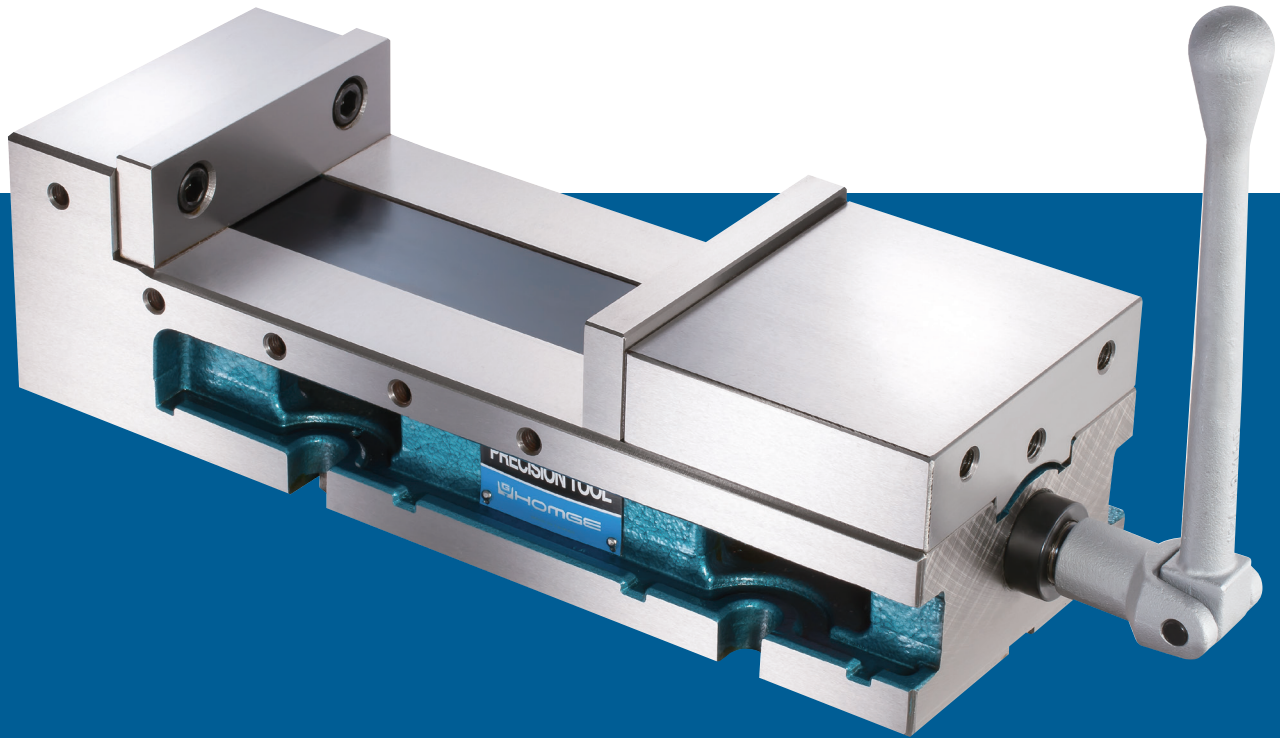
Mississauga: 905.624.5524
Toronto: 416.626.7151
Toll Free: 1.800.465.5743
sales@caliberindustrial.com

SUPER-OPEN M/C ANGLE VISE

Model: **GH-6" SUPER-OPEN 8"**
GH-8" SUPER-OPEN 12"

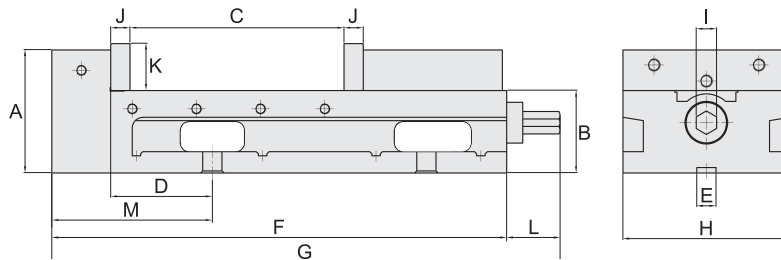
**PATENTED
M338717**

- Super-Big Jaw Opening
- Designed with one-piece vise body, both sides grounded precisely
- ANGLE-LOCK SYSTEM ensure to pull the work-piece down



STANDARD ACCESSORIES:

- 2 pcs of Alignment Wedge



SPECIFICATIONS (Material: FCD 55 Ductile Iron, Hardness: HRC 45°)

Unit: mm/inch

MODEL	A	B	C	D	E	F	G	H	I	J	K	L	M	Weight (kg)
GH-6" Super-Open8"	115	77	205	95	18	425	475	156	19	18	44	50	150	30
GH-8" Super-Open12"	148	88	300	100	18	560	610	202	19	18	63	50	175	60

MODEL				
GH-6" Super-Open8"	205	8½	278	11¾ ₂₅
GH-8" Super-Open12"	300	12	393	15½ ₂₅