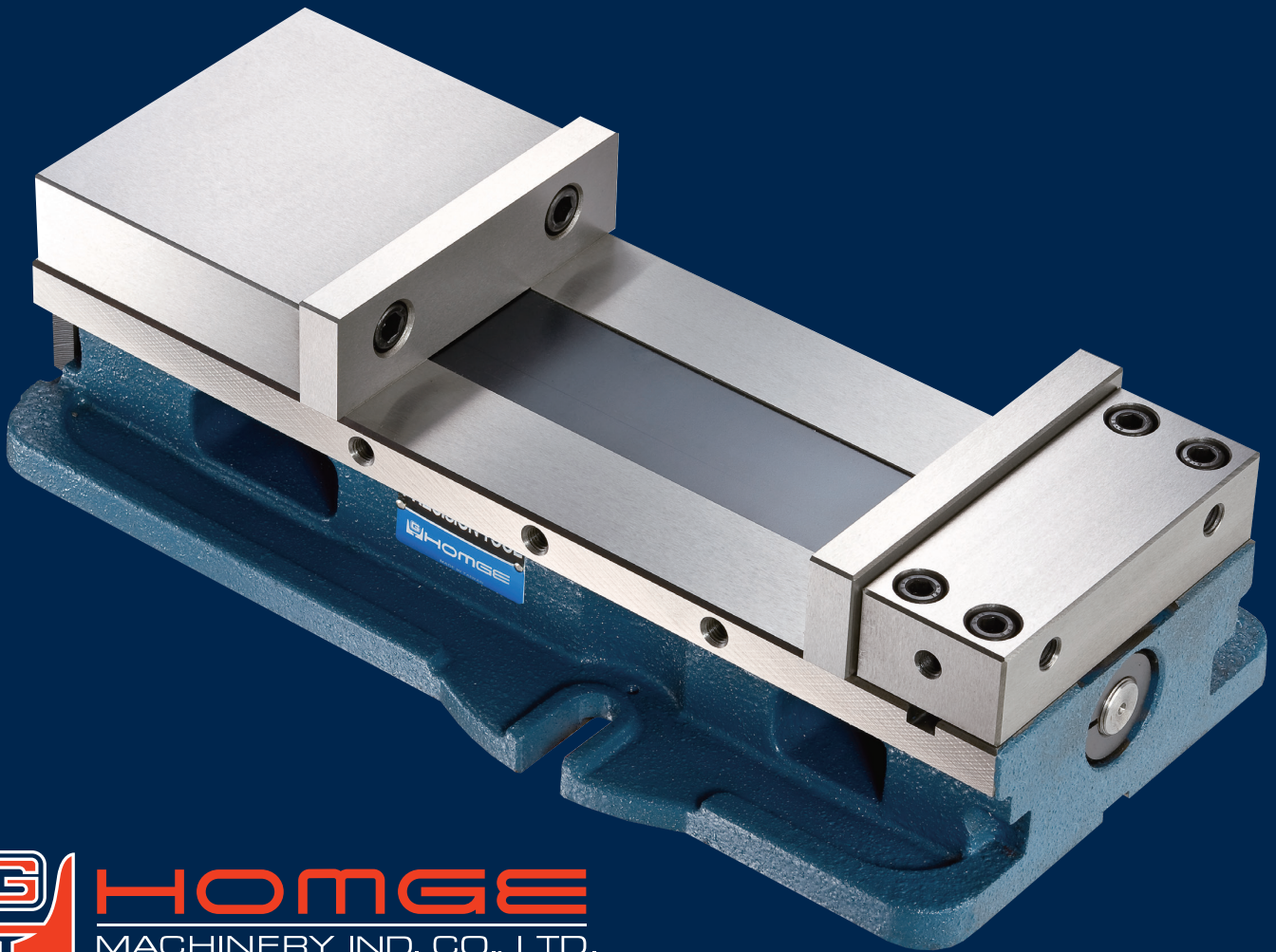




PRECISION ANGLE LOCK

WISE

Significantly upgrade any kinds of Machining Centers



- **Super-Big Jaw Opening**
- **Two Sides of Vise Body can be used as Datum Surfaces**

HOMGE is proudly distributed in Canada by Caliber Industrial Supply



Caliber Industrial Supply
5500 Tomken Rd, Unit #2
Mississauga, ON L4W 2Z4
www.caliberindustrial.com

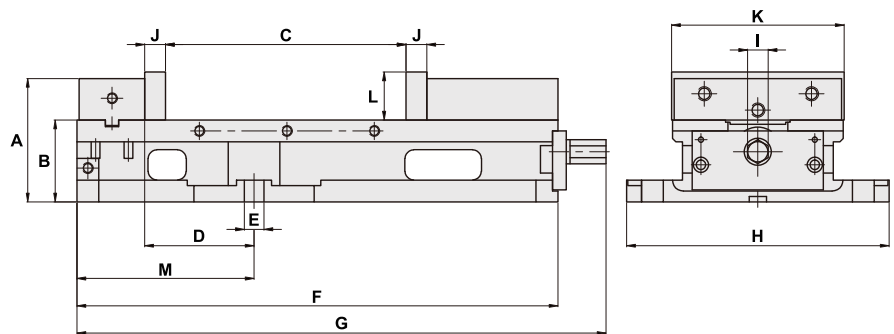
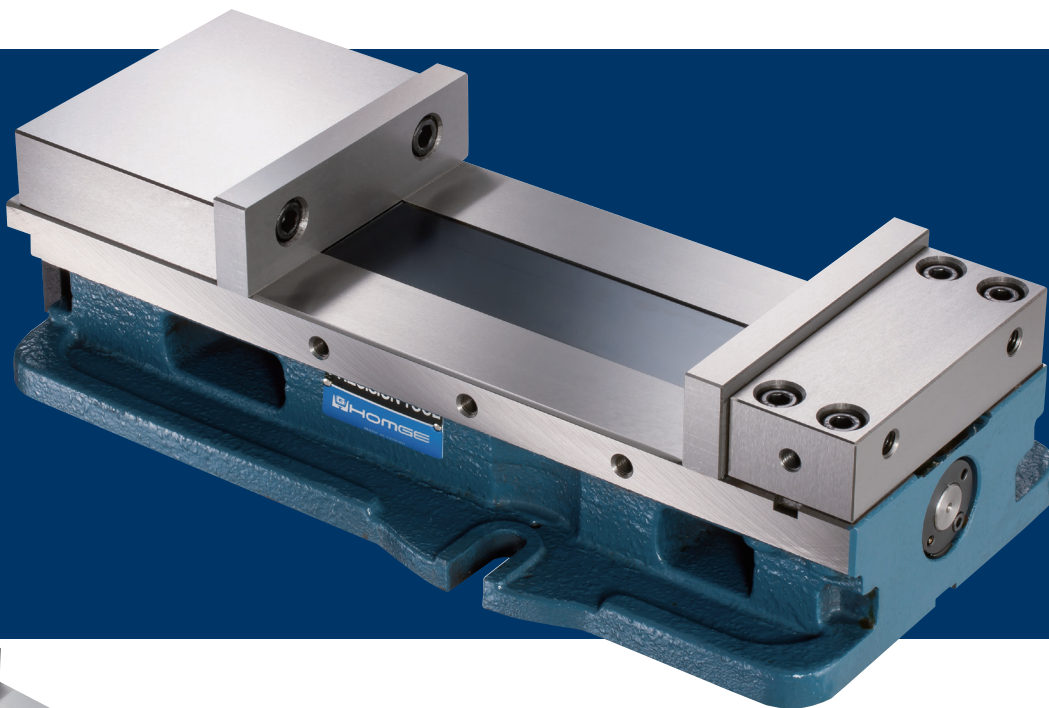
Mississauga: 905.624.5524
Toronto: 416.626.7151
Toll Free: 1.800.465.5743
sales@caliberindustrial.com

PRECISION ANGLE LOCK VISE (FRONT-PULLING TYPE)

PATENTED
M338717

Model: **TV-6" SUPER-OPEN 10"**
TV-8" SUPER-OPEN 12"

- Super-Big Jaw Opening: **10"** for TV-6" and **12"** for TV-8"
- Advanced clamping style by front pulling, which enhances the clamping force and its accuracy
- Constructed with wider fixed jaw by 4 bolts locked on top and lager keyway to ensure accuracy and durability
- Two sides of Vise Body can be used as datum surfaces





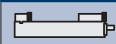

OPTIONAL ACCESSORIES:

- Swivel Base

SPECIFICATIONS (Material: FCD 60 ductile Iron. Hardness: HRC 50°)

Unit: mm

MODEL	A	B	C	D	E	F	G	H	I
TV-6" Super-Open 10"	113	77	250	100	16	455	484	240	19
TV-8" Super-Open 12"	139	87	305	138	16	570	620	300	19

MODEL	J	K	L	M					Weight (kg)
TV-6" Super-Open 10"	19	160	44	162	250	329	389	468	36
TV-8" Super-Open 12"	24	215	61	230	305	419	469	583	62