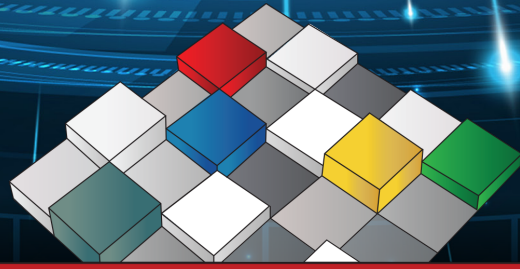


Brought To You By



MATRIX





The Matrix Family of Automated Tool Dispensers Powered by Our Unique Management Software Can Help You



Drive Down Costs



Guarantee Production Output



Optimize Stock Levels



Streamline Purchasing



Control Cost Per Unit (CPU)



Select the Right Tools for Each Job

MATRIX Does It All



MATRIX



DLS

MINI

MAXI

WIZ

ECO
LOCKER

TOOLPORT

DLS-V

HELIX

Easy to Use Touch Screen Application to Issue and Return Items

Drives MATRIX Cabinets as well as some vertical shuttle models and carousel units

Search items by group, text, numeric, application, picture and favorites

Controls access to tools by user group, job part numbers as well as budgetary restrictions

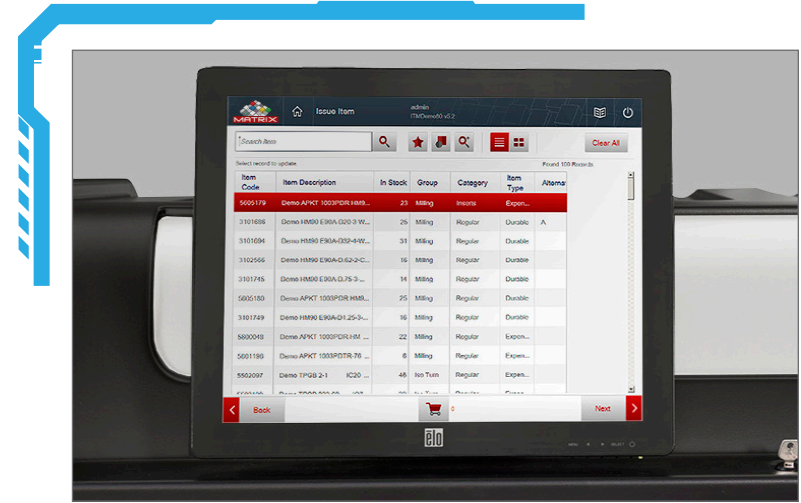
Prompts for alternative or related items

Connects to electronic catalogs and tool selection apps

Shopping basket for speedy issue of multiple items

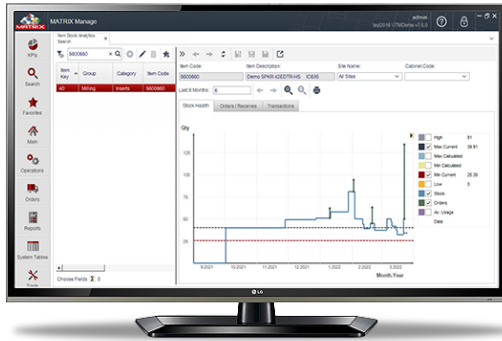
Alerts for stock shortages or discrepancies

One database for multiple sites and cabinets



MATRIX Touch Software

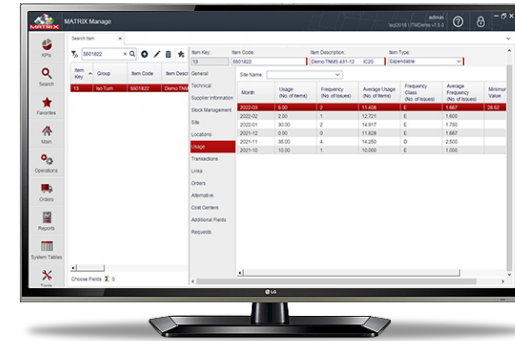
Comprehensive Application to Manage Your Entire Stock of Tools, Gauges & MRO, Whether in a Matrix Cabinet or Regular Warehouse



- Full item & supplier maintenance including prices, stock levels, locations, technical data and usage history
- A Complete suite of standard and advanced reports
 - View and save in Excel, HTML, PDF and other formats
 - Smartphone format
 - Automatic delivery by email
- A Sophisticated planning engine ensures maximum availability with minimum stock



- Analyzer dashboard and item analytics provide overview of key performance indicators (KPIs)
- CPU and tool life calculator
- Tracks serial items and gauge calibration
- Interfaces with SAP and machining cloud
- Export/Import interface with ERP systems



- Automatic calculation of re-order points and purchasing
- Build kits to issue groups of items
- Multi-language user interface
- Link photos and documents to items
- Manage the rework process

MATRIX Manage Software

MAXI & MINI

MAXI

MAXI stands tall with a large capacity, surprisingly small footprint and a sleek, ergonomic design. Secure with electronically locked drawers & bins.

MINI

MINI can go just about anywhere, sitting atop a workbench, lockable MATRIX trolley or DLS 4D. Secure with electronically locked drawers & bins.

MAXI Premium

MAXI TOUCH cabinet with upgraded specifications for an enhanced user experience.

MINI & MAXI SPECIFICATIONS

- 16 bin sizes
- Over 50 drawer options with multiple bin configurations
- Maximum bins per drawer – 198 MAXI and 96 MINI
- Auto-Lock mechanism locks bins when the drawers returned (optional)
- High Performance PC (i5)
- TOUCH - supplied with PC, touchscreen (17" MAXI & 15" MINI), UPS (surge protection and power backup), barcode reader, network switch and management software
- Manual override in case of power failure
- RFID, fingerprint and magnetic card readers are available
- Network - all versions can connect directly to the LAN. POD can also connect to a TOUCH.
- Electrical supply - 110AC +/-10% 4.6A or 220AC +/-10% 2.2A.
- Cabinet and drawer frames supplied in top-quality industrial grade zinc coated steel
- Hood and side panels supplied in ABS and bins supplied in PC-ABS
- All metal, plastic and electronic parts are made from recyclable material
- External colors: black (RAL9005) and silver (RAL9116)
- Manufactured under QMS ISO9001-2008
- CE & UL/CA certified

MAXI
Large capacity with
small foot print. Drawer
options with multiple bin
configurations



2 Year Hardware Warranty

MINI
Sitting atop a workbench
and ergonomic design



MAXI & MINI - Completely Modular

Bin Code	H mm	D mm	W mm	"H	"D	"W
50A	50	39	42	1.9	1.5	1.6
50B	50	39	92	1.9	1.5	3.6
50C	50	39	142	1.9	1.5	5.5
50D	50	39	192	1.9	1.5	7.5
50E	50	39	242	1.9	1.5	9.5
75A	75	39	42	2.9	1.5	1.6
75B	75	39	92	2.9	1.5	3.6
75C	75	39	142	2.9	1.5	5.5
75G	75	89	142	2.9	3.5	5.5
75H	75	89	192	2.9	3.5	7.5
75L	75	89	292	2.9	3.5	11.5
100A	100	39	42	3.9	1.5	1.6
100C	100	39	142	3.9	1.5	5.5
100J	100	139	142	3.9	5.4	5.5
100K	100	189	142	3.9	7.4	5.5
125XL	125	165	295	4.9	6.5	11.6
125XXL	125	165	445	4.9	6.5	17.5

MAXI

- Drawers per cabinet: 1-12 [depends on drawer heights and quantity of Auto-Locks]
- Drawer heights (net): 50mm/2", 75mm/2.9", 100mm/3.9", and 125mm/4.9"
- Load weight per drawer: up to 50kg/110lb (90kg/190lb for Jumbo drawer)
- Cabinet weight varies depending on the number of drawers and Auto-Locks: MAXI with 4 drawers
- Cabinet frame includes 4 adjustable legs and a removable front panel for forklift access
- Cabinet dimensions 1180mm/47" (W) x 752mm/30" (D) x 1469mm/58" (H)

MINI

- Drawers per cabinet: 1-5 [depends on drawer heights and quantity of Auto-Locks]
- Drawer heights (net): 50mm/2", 75mm/2.9" and 100mm/3.9"
- Load weight per drawer: up to 20kg/44lb
- Cabinet weight varies depending on number of drawers and Auto-Locks: MINI with 4 drawers is ~165kg/365lb
- Cabinet dimensions 860mm/34" (W) x 581mm/23" (D) x 800mm/32" (H)



DLS

DLS 4D

Supplementary storage capacity used as a base for a MINI cabinet.

SPECIFICATIONS

- Sturdy industrial cabinet
- Manual override in case of power failure
- Direct network connection and single power supply 230-110V
- Load weight per drawer: up to 180kg/397lb
- Front access forklift base 100mm/4" (H)

DLS-V 5D

Electronically locked storage cabinet for managing tool assemblies.

DLS-V 5D

- Controlled by MATRIX software with the option to serialize each tool assembly
- Up to 3 racks per drawer
- Rack options:
 - 6 holes rack for HSK A63 / C6 / 40T
 - 8 holes rack for 30T
- Adjustable rack height
- Sits atop DLS 4D or work bench
- Available as POD version
- Cabinet dimensions 915mm/36" (W) x 610mm/24" (D) x 1070mm/42" (H) (including Base)

DLS 4D

- Available as a POD version
- 4 Drawers per cabinet (H): 1 x 101mm/4"; 2 x 153mm/6"; 1 x 203mm/8"
- Cabinet dimensions: 915mm/36" (W) x 610mm/24" (D) x 820mm/32" (H)

5D DLS-V
electronically locked 5
vertical drawers



DLS CONTINUED

DLS 8D

Economical solution with flexible drawer partitions suitable for small and large items.

DLS 8D

- 2 versions: TOUCH (stand-alone) and POD (add-on)
- TOUCH – supplied with all-in-one pc-touchscreen, bar code reader, network switch and management software
- 8 Drawers per cabinet (H): 3 x 101mm/4"; 4 x 127mm/5"; 1 x 203mm/8"
- Cabinet dimensions 915mm/36" (W) x 610mm/24" (D) x 1220mm/48" (H)

DLS 13D

- Sturdy industrial cabinet with electronically locked drawers
- 2 versions: Main with touchscreen POU or auxiliary (add-on)
- Load weight per drawer: approx. 400lbs
- Manual override in case of power failure
- Cabinet color: Black
- Direct network connection and single power supply 110-230V
- Cabinet dimensions: 36" W x 46" H x 27" D
- Drawer dimensions: 12-3" High & 1-4" High

DLS 13D

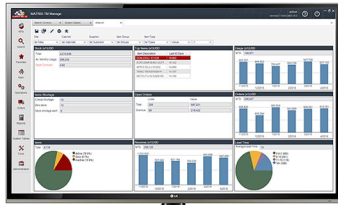
Economical solution with flexible drawer partitions suitable for small and large items.

electronically locked drawers 8





DLS 4D
electronically locked
drawers



DLS 13D
Sturdy industrial cabinet
with electronically
locked drawers

Yellow ToolPort - 8D/4D/4 x 4

SPECIFICATIONS

- Large capacity / small footprint 800 inserts (4D bench-top model) or 1600 inserts (8D free standing model)
- TOUCH supplied with PC, touchscreen, single power supply 110-230V, barcode reader and network switch
- Single or double size reusable containers store each insert
- 10 cartridges per drawer
- 1 SKU per cartridge
- Each cartridge is locked and pre-loaded with 10 single containers
- Containers per cartridge – maximum 20 single or 10 double
- Controlled by MATRIX software
- 8D model dimensions: 677mm/27" (W) x 614mm/24" (D) x 1448mm/57" (H)
- 4D model dimensions: 677mm/27" (W) x 614mm/24" (D) x 876mm/35" (H)
- Front access forklift base: 100mm/4" (H)
- CE certified
- 4 X 4
- Combines 4 single insert drawers and 4 DLS style locked drawers
- DLS style drawer dimensions: 517mm/20.3" (W) x 530mm/20.8" (D) x 97mm/3.8" (H)
- Supplied with 3 partitions and 16 dividers per drawer
- Same cabinet dimensions as 8D model
- Available as TOUCH or POD version



4D/8D
accountability % 100 control % 100



4X4
Secure environment for
Inserts and Tools



WIZ & ECO LOCKERS

SPECIFICATIONS

WIZ

- Reconfigurable
- Sleek modern design, transparent doors and LED lighting
- "DIY" installation
- WIZ cabinet comprises:
 - Hood
 - Top and bottom frames
 - Base with forklift access
- 677mm/27" (W) x 614mm/24" (D) x 1448mm/57" (H)
- 4-12 doors (lockers) per 2 column frame
- 6-18 doors (lockers) per 3 column frame
- The Master cabinet houses 1 or 2 controllers – each controller can actuate 32 doors
- Up to 2 slave cabinets can be connected to a master cabinet

- Available as a POD (add-on) version
- Manual override in case of power failure
- Direct network connection
- Single power supply 12V 15A per cabinet
- Cabinet color - black (RAL9005)
- Cabinet dimensions – 2070mm/81.5" (H) x 914mm/36" (W) x 457mm/18" (D)
- Load weight per shelf – 15kg/33lbs
- Runs on Matrix Software
- 6 door options / locker dimensions:

ECO LOCKERS

- Transparent windows on all locker doors
- 21 or 12 Door configuration
- Load weight per shelf: 75lbs
- Manual override in case of power failure
- Cabinet color: Black Matted
- Direct network connection and single power
- Supply 110-230V
- Can be set up as main unit with touchscreen

- 21 & 12 -Door lockers are configurable to accommodate larger items
- Runs on Matrix Applications



	Door Code	H mm	W mm	D mm	" H	" W	" D
2 Column Frame	2C-S	157	457	457	6	18	18
	2C-D	305	457	457	12	18	18
	2C-T	457	457	457	18	18	18
3 Column Frame	3C-S	157	305	457	6	12	18
	3C-D	305	305	457	12	12	18
	3C-T	457	305	457	18	12	18

WIZ
Reconfigurable
transparent doors and
LED lighting



ECO LOCKER
21 & 12 Door lockers are
configurable to accommodate
larger items



HELIX



- High Security-100% Accountability
- Dimensions: 73" Tall x 38.5" Wide x 40" Deep
- Weight: Approx. 650 lbs unstocked
- Holds up to 60 SKUs
- Provides secure point-of use distribution
- 2 versions: Main with Touchscreen POU or Aux (add-on)
- 73" Tall x 38.5" Wide x 40" Deep
- Cabinet Color: Black
- May require repackaging
- Runs on Matrix Software
- **Additional sizes available upon request

Helix ship with below configuration	
Shelf 1	QTY 10-10 Count Helix
Shelf 2	QTY 10-10 Count Helix
Shelf 3	QTY 10-15 Count Helix
Shelf 4	QTY 10-15 Count Helix
Shelf 5	QTY 10-18 Count Helix
Shelf 6	QTY 10-24 Count Helix

STANDARD HELIX CONFIGURATION**				
Helix Count	10	15	18	24
Slot Depth	2.02	1.30	1.05	0.75
Each single helix shelf can hold 10 SKUs in a 2.5 in opening Shelf height 5.5-7.25in Maximum shelf capacity 100 lbs.				

Tool Crib Management from the Palm of Your Hand!

- MATRIX app manages traditional warehouse and tool room
- Records transactions via Wi-Fi connection to networked MATRIX data base
- Compatible with any Android device, preferably with a built-in 1D/2D scanner
- Requires MATRIX software license v6.5 or higher



Go Digital

The Power of the Cloud

Regardless of the size or complexity of your tool database, it's never been a better time to connect and enjoy the hassle-free benefits of the Cloud.

We offer an economical subscription-based service to migrate your local data base to our MATRIX Cloud.

A scalable solution based on Microsoft Azure's best-in-class platform.

Multi-Site

Are you looking for a convenient way to manage your tools across different sites? Our latest software versions provide a complete solution.

For example, save time by creating only one item for use at different sites. Allow users to access all or just some site/s. Manage reports per site. The system's flexibility allows you to reduce time and errors.



Cost Per Unit (workpiece)

As the famous quote goes: "You can't improve what you don't measure."

Understanding the real cost to produce a product is key to performance-based continuous improvement. MATRIX software offers management tools that benchmark and report CPU to drive down production costs.



Industry 4.0

Industry 4.0 is no longer just a vague slogan. More and more companies are leveraging a range of digital apps to seamlessly communicate with each other and a range of smart devices.

MATRIX can support your Industry 4.0 integration with built-in communication options and some clever IT equipment, like the RTLS and MATRIX Pouch. It also offers stock visibility across numerous shop floor apps and e-commerce.



Empowering Distributors for Over 70 Years

About Us

Berkshire eSupply is the ultimate growth partner for independent distributors in the industrial marketplace. With a rich history of exceptional service, we blend cutting-edge technology, vast product offerings, and strategic partnerships to drive your business towards unprecedented success.

Innovative Technology

BerkshireESupply.com: Your Personalized Portal

Our state-of-the-art website leads in “Industry 4.0” and the Internet of Things, offering real-time pricing, stock checks, and product ordering, putting you on the fast track to efficiency and growth. berkshireEsupply.com

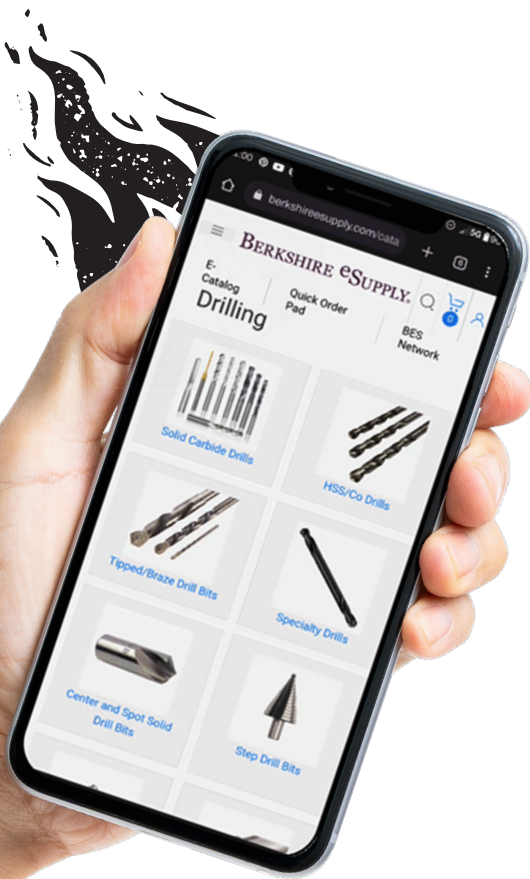
Distribution & Logistics

- **Superior Logistics Solutions ‘4.0’:** Advanced systems for increased order processing efficiency and reduced lead times.
- **Drop Shipping & Supplier Consolidation:** Deliver directly to your customers under your brand name, with incentives for supplier consolidation.
- Cost Reduction Strategies
- **Lower Transaction Costs:** Direct drop shipping, eliminating manufacturer minimum orders, and reducing fulfillment lead times.
- **Minimized Back-End Costs:** Advanced order processing and reduced on-site inventory expenses.



Key Advantages

- **Strategically Located Distribution Centers:** Ensuring high fill rates and same-day shipping.
- **Extensive Product Selection:** Over 2 million industrial/MRO products and 1,200 suppliers.
- **Single Source Procurement Solutions:** Streamlining your procurement process.
- **Customizable E-commerce Solutions:** Tailored platforms to fit your business needs.
- **Effective Go-to-Market Strategies:** Proven methods to ensure market success.
- **Private Label Solutions:** Customized e-commerce platforms, catalogs, flyers, and promotional materials to build your brand.



LET US HELP

IGNITE & MAXIMIZE

YOUR OPERATIONS
with our advanced industrial solutions

E-Commerce Integration

Become a Truly E-Connected Distributor

Our e-commerce solutions remove the cost and complexity of IT management. Brand your website, manage content, pricing, and customer orders effortlessly with features like mobile-friendly websites, real-time inventory, shipment tracking, and ERP integration.

Vending Solutions

Private Label Vending Solutions

A turnkey service offering robust cabinets, intuitive software, and customized reports. Own the equipment, software, and customer relationship without royalties or commissions.

Comprehensive Support

Expert Support Team

Backed by our experienced vending team, ensure 100% product availability with our spot buy capability and reliable, low-cost systems and software.



Top-Tier Brands

Explore our Premier Selection of leading brands in cutting-tools, PPE and more.

Mitutoyo



Mahr

SHOWA

CGW
CABEL GRINDING WHEELS

KURT
WORKHOLDING

NORTON

DEWALT

BISON

Starrett

Jergens
MANUFACTURING EFFICIENCY

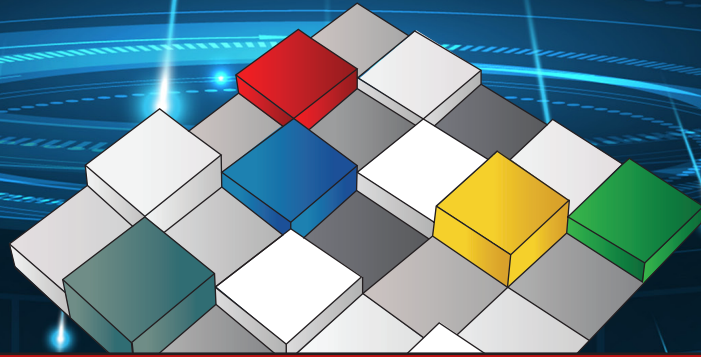
superiorglove

WEILER

PROTO

LOCTITE

STANLEY



MATRIX